

Leased



35 Tibouchina St, Mountain Creek



## Sprawling family home

This home is perfectly positioned in the heart of Brightwater and will tick every box on your family's ultimate wishlist. The floorplan is as functional and inviting as it is comfortable with a spacious and central kitchen, family, meals and living room that connects to the alfresco. This enviable indoor-outdoor lifestyle is perfect for those who love to entertain while the kitchen is large and designed to delight the avid cook. A light-filled rumpus room will make the ideal media room or teenager's retreat plus there's also a study for those who work from home.

All three of the guest bedrooms are set in their own wing along with an open multi-purpose room, the laundry and the main bathroom with a separate bath, shower and toilet. Built-in robes service all the guest rooms while your luxe master retreat features a walk-in

🛏 4 🍳 2 🚗 3

Price \$850 per week

Property Type Rental

Property ID 107

Agent Details

Office Details

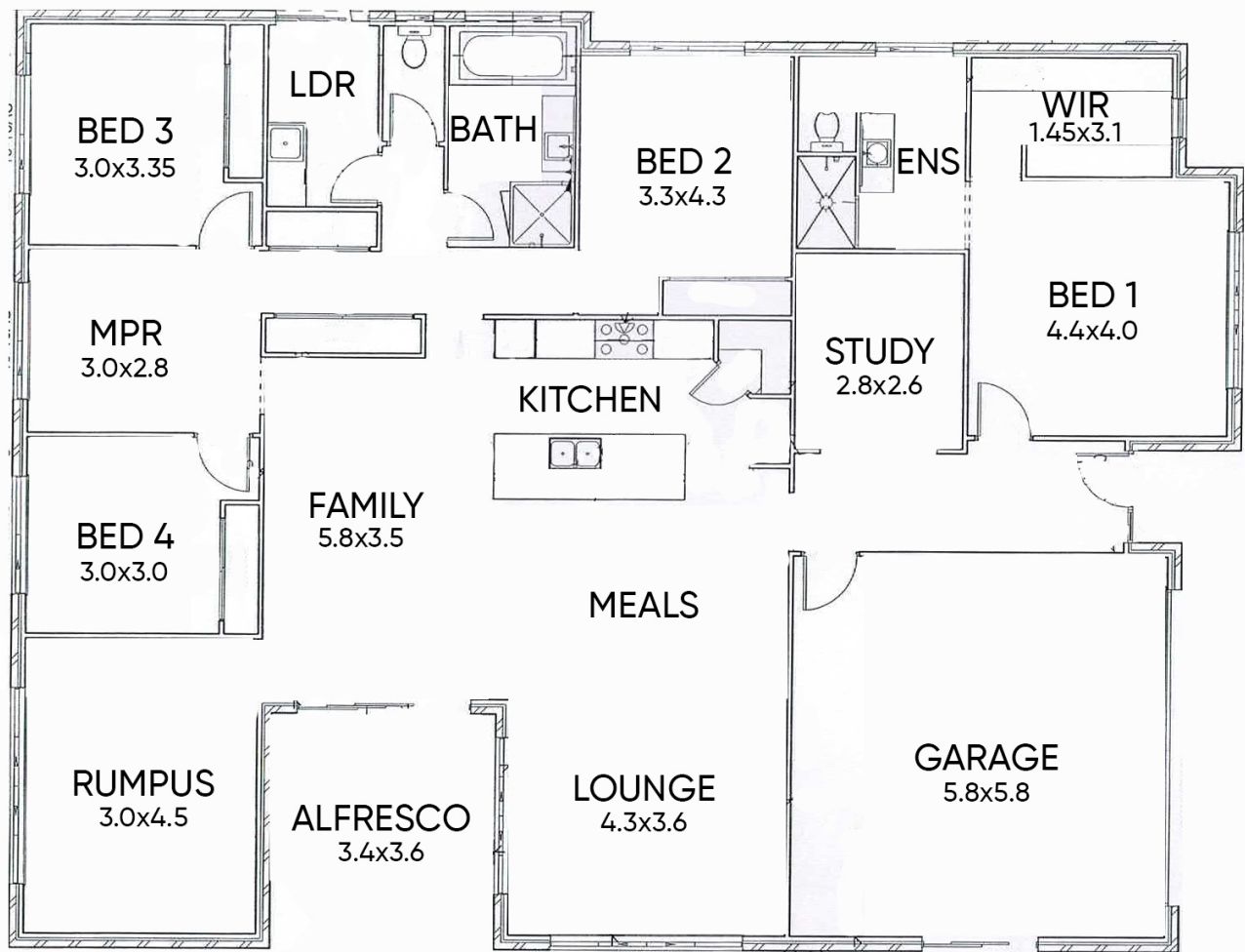
Rowling & Co Property  
0437 443 013

**ROWLING & CO**  
PROPERTY

robe and an ensuite. You can leave the cars at home in the double garage and walk to nearby parks and bus stops along with all of Brightwater's amenities. The cafes, shops and the local ALDI are within easy reach as is the Brightwater Hotel and Brightwater State School.

- Modern and spacious family home with something for everyone
- Four bedrooms, two bathrooms and multiple living spaces
- A chef's kitchen with stainless steel appliances, a walk-in pantry and an island
- Open family, meals and living room plus a rumpus, study and multi-purpose room
- Covered and private alfresco where you can host guests in absolute style
- Ample built-in storage including bedroom robes and a linen cupboard
- Ceiling fans plus ducted air-conditioning and a solar panel system
- A double garage, with internal access, plus parking for a caravan or boat
- Low-maintenance landscaping with established gardens and a terraced yard
- Walk to parks, shops, bus stops, the local ALDI and Brightwater State School
- Close to Mooloolaba, USC Sunshine Coast and the Sunshine Motorway

The above information provided has been furnished to us by the vendor/s. We have not verified whether or not that information is accurate and do not have any belief in one way or the other in its accuracy. We do not accept any responsibility to any person for its accuracy and do no more than pass it on. All interested parties should make and rely upon their own inquiries in order to determine whether or not this information is in fact accurate.



\*measurements are indicative only & may vary from actual