

Sold



5 Mahonia Lane, Mountain Creek



## It's all at your fingertips.

In this quiet street nestled in the small master planned community of Brightwater, it's hard to believe you're this close to everything.

It's all at your fingertips: from schools, the Sunshine Coast University Hospital and shopping centres to the beaches of Alexandra Headland and Mooloolaba. Be on the Kawana Way in moments, the Sunshine Motorway in three minutes and the Bruce Highway in under ten. No matter where you need to be on the Sunshine Coast or beyond, you'll get there quick and be back to enjoy your new home sooner.

Brightwater is among the Sunshine Coast's premier established communities, with its own lake, waterfront tavern, supermarket, playgrounds and parks. Walk or ride with the kids to Brightwater State School along the extensive network of paths, or for teens, this home falls

🛏 4 🍽 2 🚗 2 📄

360 m2

**Price** SOLD for  
\$825,000

**Property Type** Residential

**Property ID** 221

**Land Area** 360 m2

### Agent Details

Kelly Rowling - 0437 443 013

Dan Rowling - 0421 456 776

### Office Details

Rowling & Co Property

into the Mountain Creek State High School catchment.

But there's more to rave about than the location. Here, tucked away behind a private frontage and lush front gardens, you'll find a feature-packed modern home fit for families, entertainers, barbecue masters, home cinema fans and everyone in between.

Two separate living spaces, both with raked ceilings and air conditioning, allow plenty of breathing space for the whole family.

The main bathroom features a bathtub and separate toilet, while the ensuite is tucked away beyond the master bedroom. The master bedroom offers a walk-in wardrobe and split-system air conditioning, while the three additional bedrooms are fitted with fans and built-in wardrobes.

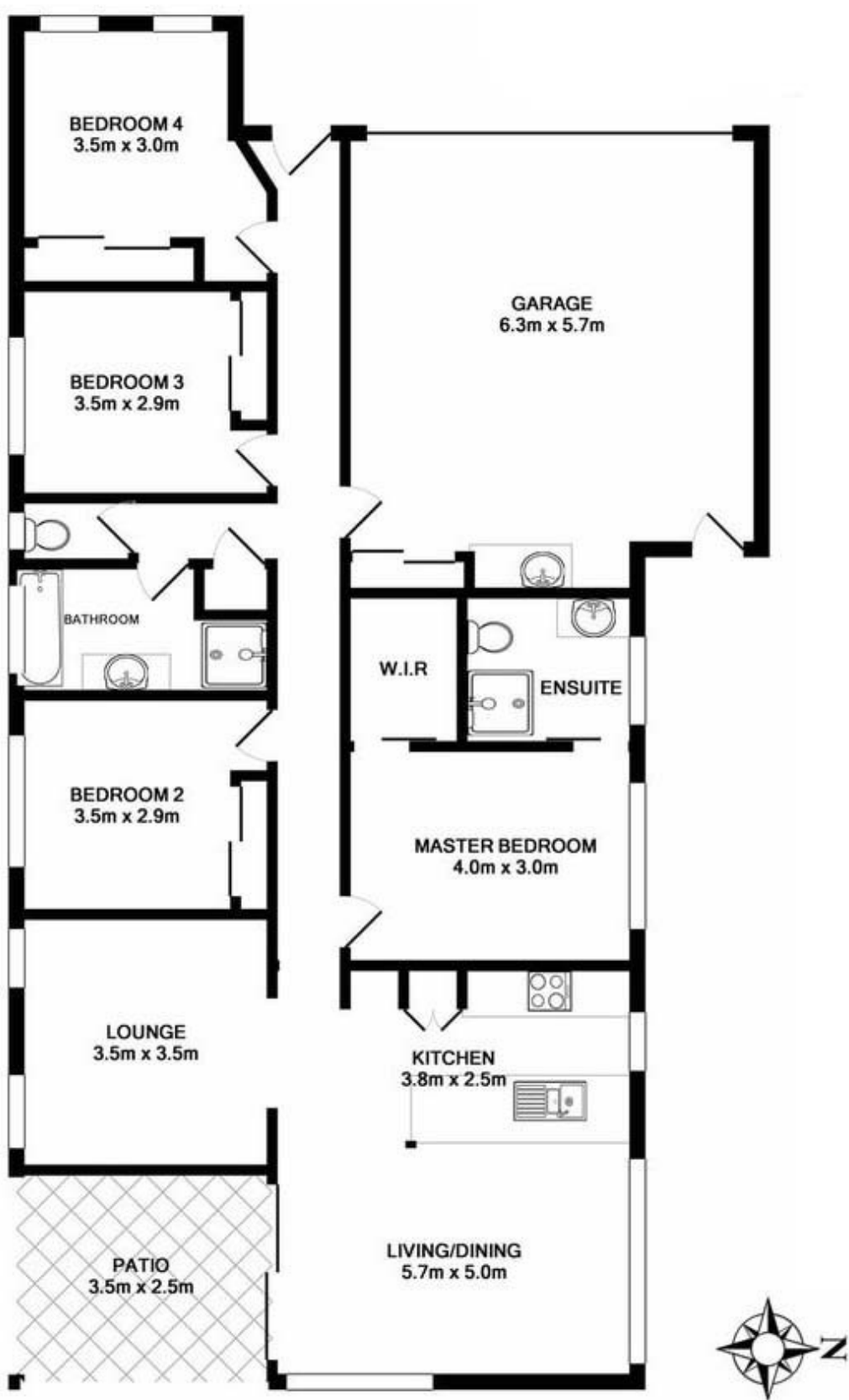
The east-facing covered patio overlooking the backyard is the perfect place to entertain, crack a quiet beer on a Friday afternoon or just watch the kids run wild in the backyard. And yes, there's room in the yard for a pool. The garden shed will satisfy the keenest of green thumbs and a 5000 litre rainwater tank also servicing the laundry and toilets will help drought-proof your future.

With everything it has to offer, is 5 Mahonia Lane the smartest buy you'll ever make?

- Functional and well equipped 4 bedroom home
- Double car garage
- master with ensuite and WIR
- Separate lounge/media room
- Air-conditioning in master, media and lounge
- Fans throughout
- School catchment for Brightwater and Mountain Creek schools
- Close to everything - 7 minutes to Mooloolaba, 10 Minutes to Maroochydore and 7 Minutes to Kawana

Call Kelly or Dan today to secure your chance to inspect.

The above information provided has been furnished to us by the vendor/s. We have not verified whether or not that information is accurate and do not have any belief in one way or the other in its accuracy. We do not accept any responsibility to any person for its accuracy and do no more than pass it on. All interested parties should make and rely upon their own inquiries in order to determine whether or not this information is in fact accurate.





**ROWLING & CO**  
PROPERTY

5 Mahonia Lane, Mountain Creek

---