

Sold



32 Tibouchina St, Mountain Creek



Large Designer Home with Plenty of Space for the Whole Family

If you're looking for a home that will take your breath away each and every day, this enormous four-bedroom, 3.5-bathroom designer property might just do the trick.

With impeccable design inside and out, phenomenal outdoor entertaining areas and heated swimming pool with spa, this really is a special residence to own.

A beautiful modern façade is the first thing to impress upon arriving home. Sleek lines, triple garage and a well-manicured lawn with artful planting welcome you home.

Step inside and be greeted with space galore in a modern and practical 451m2 open-plan design with multiple separate living areas for the whole family. The downstairs encompasses the large study at the front of

🛏 4 🍷 3 🚗 3 🌿 📏

600 m2

Price SOLD for
\$1,500,000

Property Type Residential

Property ID 230

Land Area 600 m2

Floor Area 451.50 m2

Agent Details

Kelly Rowling - 0437 443 013

Dan Rowling - 0421 456 776

Office Details

the home, separate media room, living room, walk-in pantry and large dedicated laundry.

The home is full of attention to detail, from the timber floors and stylish light fixtures to the large stone island and modern miele appliances found in the kitchen including.

Upstairs, four bedrooms ensure a great night's sleep for all. Two are fitted with built-in robes, one with a walk-in robe, and the vast over-sized master suite has its own dressing room, ensuite, and balcony, from which you can admire spectacular blue skies and stunning sunsets.

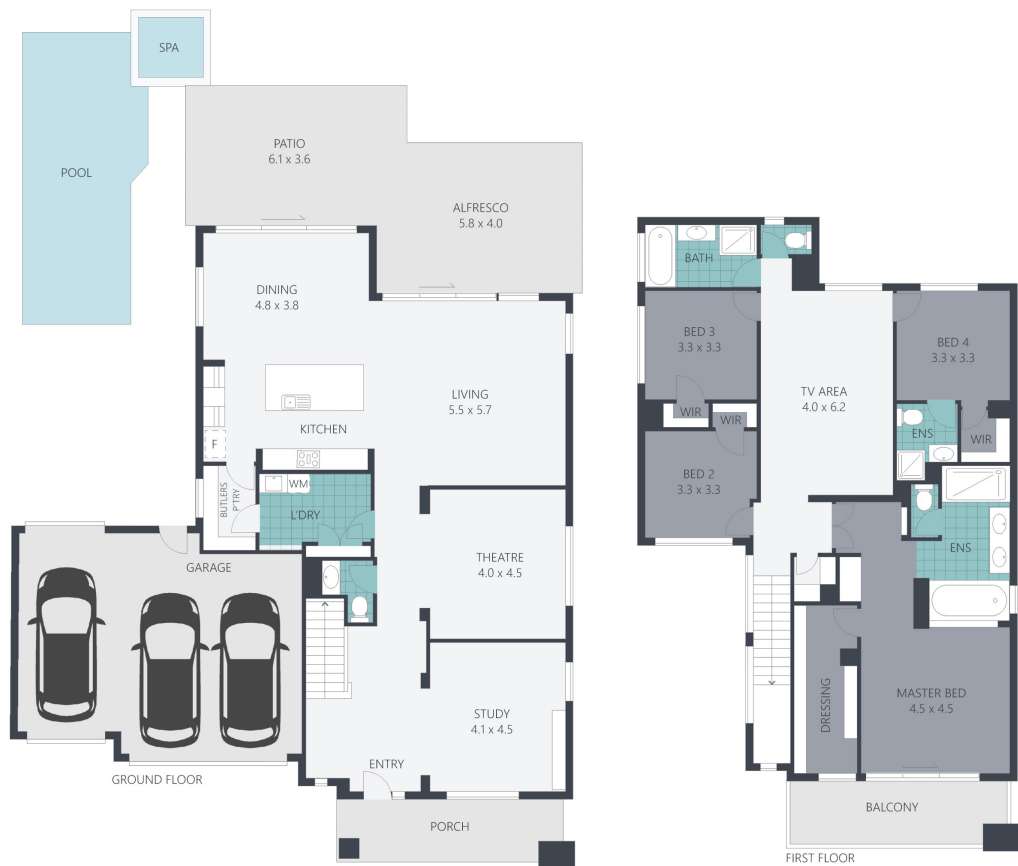
Outside, sliding doors take you out to your massive outdoor entertaining area. With an attractive mix of decking and patio, this space is great for entertaining. Around the corner, a resort-style pool awaits - complete with a separate spa area, it's easy to drift away to a state of pure bliss and enjoy everything this property offers.

- Huge 451m2 four-bedroom, 3.5-bathroom family home
- Sleek open-plan living spaces with a stylish design
- Master suite with a generous dressing room, ensuite, and balcony
- Additional rooms include a study, theatre, TV area, and walk-in pantry
- A spacious outdoor area is an entertainer's dream come true
- Solar system and ducted air conditioning throughout
- Soak in a heated resort-style pool with spa
- Three-car garage with drive-through roller door at the rear
- Proximity to shopping, schools, reserves, and the beach
- Moments from Kawana Shoppingworld and The Sunshine Plaza

Rowling & Co Property
0437 443 013

ROWLING & CO

The above information provided has been furnished to us by the vendor/s. We have not verified whether or not that information is accurate and do not have any belief in one way or the other in its accuracy. We do not accept any responsibility to any person for its accuracy and do no more than pass it on. All interested parties should make and rely upon their own inquiries in order to determine whether or not this information is in fact accurate.



32 Tibouchina Street, **MOUNTAIN CREEK**
INTERNAL: 320m² EXTERNAL: 73m² GARAGE: 58m² TOTAL: 451m²

ARTIST'S IMPRESSION ONLY: While every attempt has been made to ensure the accuracy of this floor plan's areas and measurements of doors, windows, rooms and all other items are approximate and no responsibility is taken for any error, omission, or mis-statement. This plan is for illustrative purposes only and should only be used as such by any prospective purchaser.

4

3.5

3

