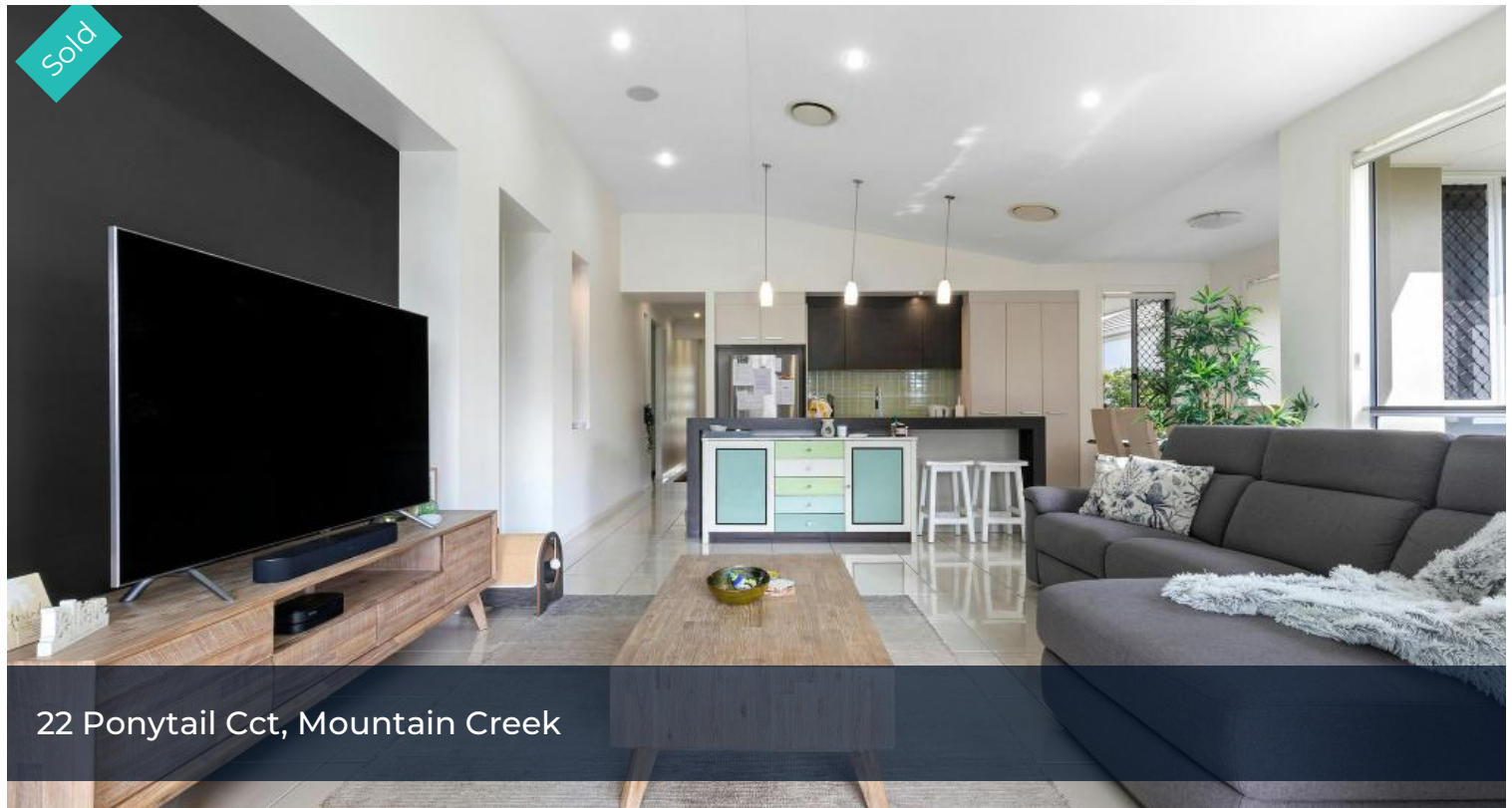


Sold



22 Ponytail Cct, Mountain Creek



Beautiful home moments from parklands, beaches and more

Nature? Check. Beaches? Check. Room for the whole family? Check.

This three-bedroom plus study, two-bathroom home is sure to tick all of your boxes and more.

As an ex-display property, it's full of stunning finishes, whilst having all of the amenities and conveniences that every family desires. You'll discover an immediate feeling of warmth from the moment you arrive. A pretty, well-manicured front garden and driveway pull you towards this lovely house while inside, an open-plan living, kitchen and dining area awaits. Tiled, this space is cool and bright, with room to chill and entertain. The kitchen is one-of-a-kind, with splashes of colour and a large centre island with a dual sink.

🏠 3 🚿 2 🚗 2

Price SOLD
Property Type Residential
Property ID 257

Agent Details

Kelly Rowling - 0437 443 013
Dan Rowling - 0421 456 776

Office Details

Rowling & Co Property
0437 443 013

ROWLING & CO
PROPERTY

The bedrooms here are carpeted, with the master enjoying a walk-in robe and ensuite with double vanity. Both additional bedrooms have built-in robes and access to the main bathroom with its beautiful tiling, shower and tub. Entertainment is on hand in your personal media room and you can even work from home in your spacious study. Sliding doors take you from the living spaces to your outdoor areas. A covered patio is ideal for warm evenings and has space for a huge table that's great for entertaining. There's a barbeque at your disposal too, plus a wrap-around lawn to keep kids and pets happy. You'll be in a superb area, right opposite the park, round the corner from Aldi, and just 8 minutes from Mooloolaba.

Features we love -

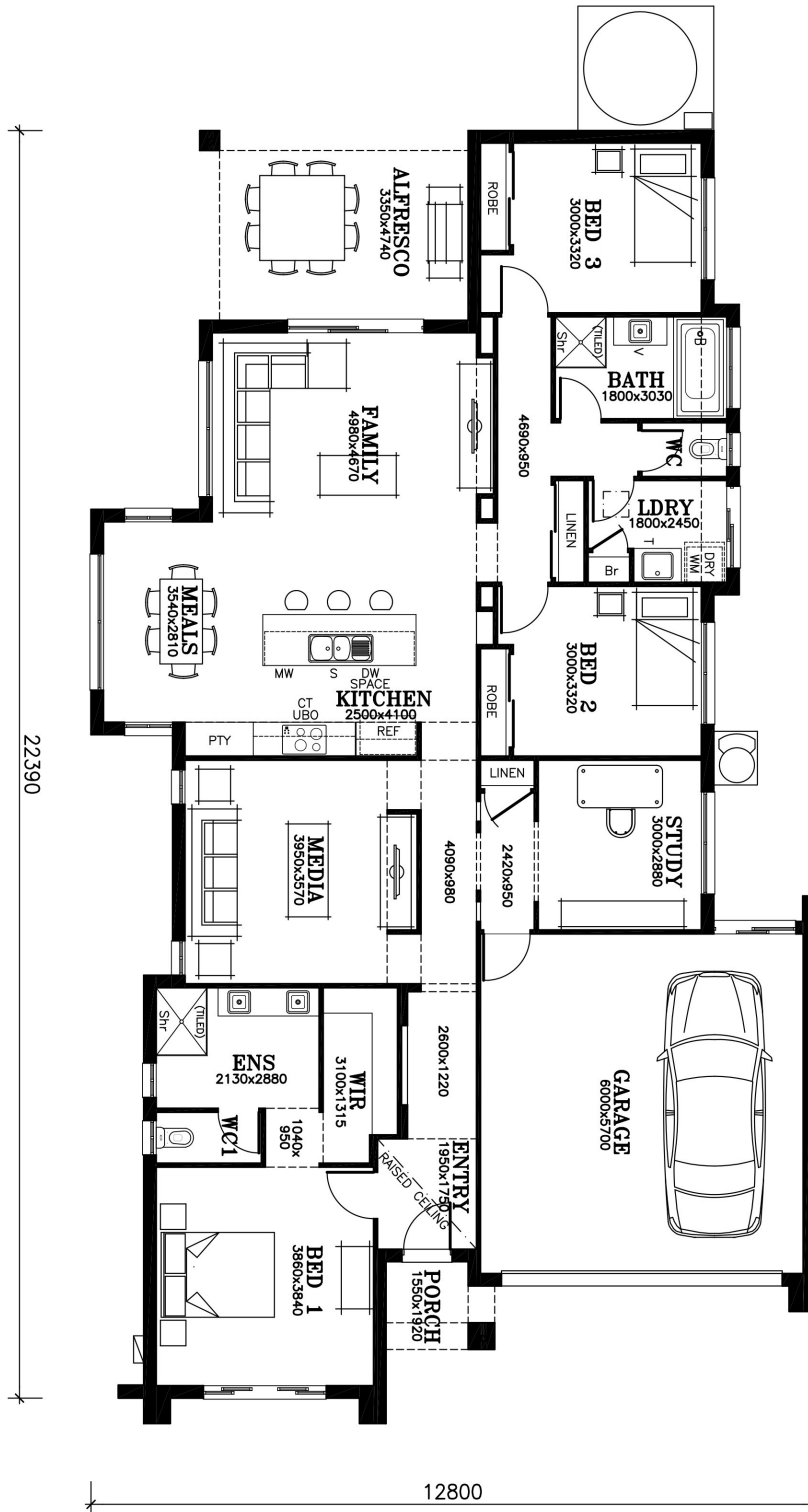
- Modern and stylish three-bedroom, two-bathroom family home
- Owner's suite with a walk-in robe and an ensuite with twin sinks
- Spacious open-plan living ready for the busyness of everyday life
- Additional rooms include a media room and a study for flexibility
- Covered outdoor entertaining area that suits year-round barbeques
- Ample driveway, a two-car garage, a separate laundry
- Quiet location within walking distance of shops, school and tavern
- Across the road from the park and not far from beaches
- Please note this property is currently tenanted for \$650 per week until Nov 2022

The above information provided has been furnished to us by the vendor/s. We have not verified whether or not that information is accurate and do not have any belief in one way or the other in its accuracy. We do not accept any responsibility to any person for its accuracy and do no more than pass it on. All interested parties should make and rely upon their own inquiries in order to determine whether or not this information is in fact accurate.



ROWLING & CO

PROPERTY



22 Ponytail Circuit
Mountain Creek

FLOOR AREAS:		
GROUND	: 168.67 sqm	18.16 sq
GARAGE	: 37.63 sqm	4.05 sq
PORCH	: 2.77 sqm	0.30 sq
ALFRESCO	: 15.87 sqm	1.71 sq
TOTAL	: 224.94 sqm	24.22 sq