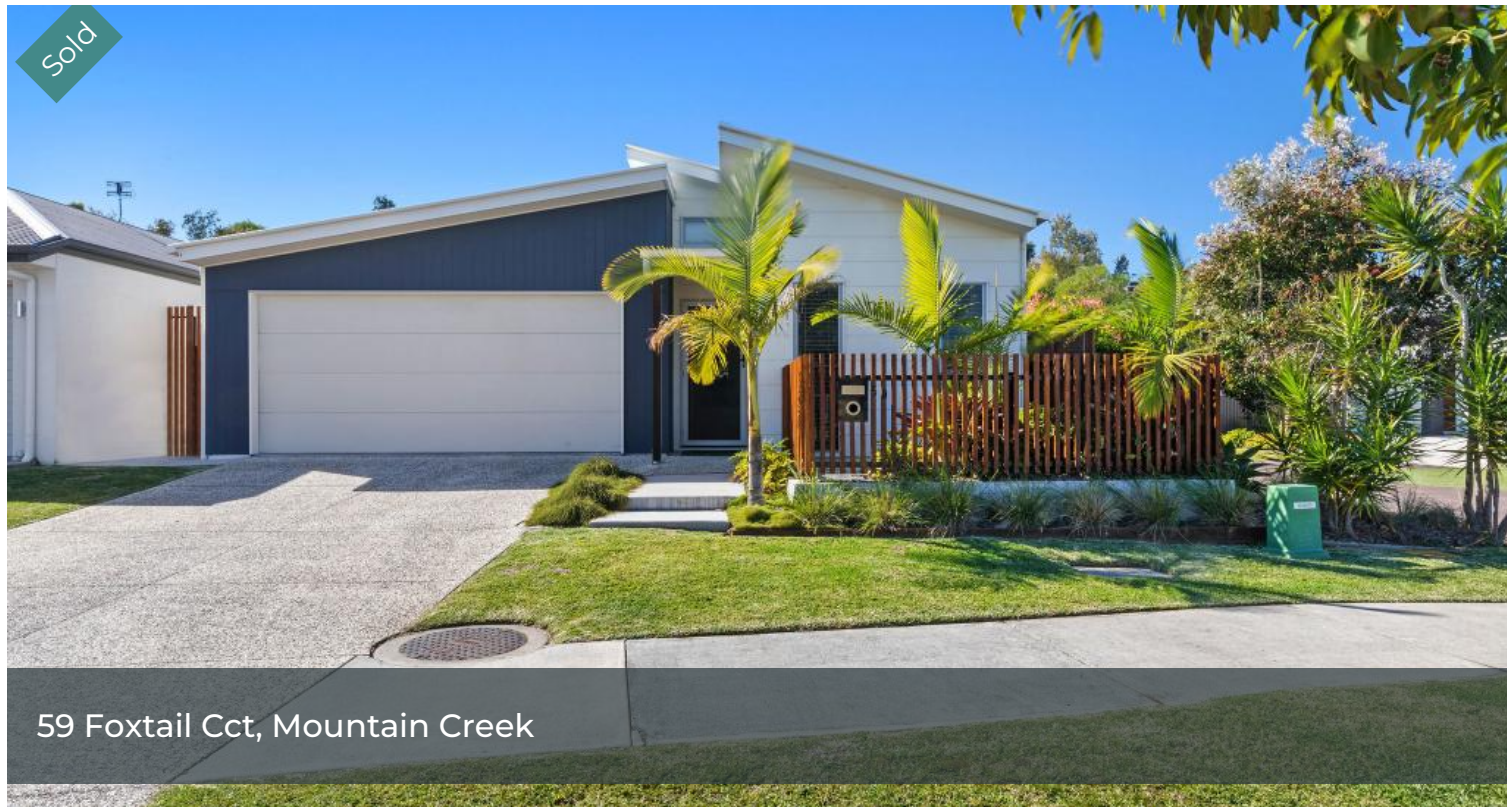


Sold



59 Foxtail Cct, Mountain Creek



Modern family-friendly living on a peaceful and private block

🍽️ 4 🛋️ 2 🚗 2 📏

384 m2

Presented like new, this is an opportunity to enjoy the very best in contemporary living within a quiet family-friendly enclave of Brightwater. You will enjoy the added privacy of only one neighbour along with a sprawling floorplan that has been crafted for the hustle and bustle of everyday life.

Price	SOLD
Property Type	Residential
Property ID	53
Land Area	384 m2
Floor Area	224 m2

Agent Details

Kelly Rowling - 0437 443 013

Dan Rowling - 0421 456 776

Office Details

Rowling & Co Property
0437 443 013

The open-plan kitchen, dining and family room is set under a tall raked ceiling. Stunning polished porcelain tiles flow underfoot while an abundance of natural light and a crisp neutral colour palette ensure a bright and welcoming interior that will instantly feel like home.

Prepare a gourmet feast in the beautifully appointed kitchen with a large island, quality appliances and a walk-in pantry or step out to the expansive alfresco and cook up a storm on the barbeque. Here, you can relax with friends and admire views over the fenced yard with the tranquil backdrop of the lush neighbouring green space.

There are four bedrooms and two bathrooms

including two secondary bedrooms with built-in robes. The master suite boasts a large walk-in robe, access to the rear yard and a luxe ensuite.

- Impeccably presented four-bedroom, two-bathroom family home
- Open-plan kitchen, dining and family room opening to the alfresco
- Host guests around the barbeque and admire the lush neighbouring green space
- A large master suite opens to the backyard with a walk-in robe and an ensuite
- A central main bathroom complete with a separate bath, shower and toilet
- Ceiling fans throughout the home plus a large laundry with external

access

- A double garage with internal access completes the impressive layout
- Fenced and low-maintenance front and rear yards for privacy
- Quiet location just a short walk from the Brightwater State School OSHC
- Walk to parks, the local dog park, Brightwater Hotel, ALDI and nearby shops
- Close to Mooloolaba, Kawana, the Sunshine Motorway and USC

The above information provided has been furnished to us by the vendor/s. We have not verified whether or not that information is accurate and do not have any belief in one way or the other in its accuracy. We do not accept any responsibility to any person for its accuracy and do no more than pass it on. All interested parties should make and rely upon their own inquiries in order to determine whether or not this information is in fact accurate.



ROWLING & CO
PROPERTY

59 FOXTAIL CCT
MOUNTAIN CREEK



SITE PLAN (NOT TO SCALE)

