

Sold



Unit 42, 19 Riviera Pl, Mountain Creek



## Entry Level Brightwater!

This modern and stylish home is set within Brightwater's Essen block. Priced to sell, this is an exciting opportunity within one of the region's most renowned family-friendly locations.

Crafted for contemporary living, this home starts with an open-plan kitchen, dining and lounge zone on the ground floor. Here a glass sliding door helps to create an easy flow out to the covered alfresco where you can cook on the barbeque or relax with your morning coffee and overlook the courtyard. The kitchen is a home cook's dream with a suite of quality appliances and a huge pantry.

Both bedrooms are set on the second floor, and both feature spacious robes and beautifully finished ensuites. On this floor you'll also find the light filled

🛏 2 🍳 2 🚗 1

Price	SOLD for \$500,000
Property Type	Residential
Property ID	81

### Agent Details

Kelly Rowling - 0437 443 013  
Dan Rowling - 0421 456 776

### Office Details

Rowling & Co Property  
0437 443 013

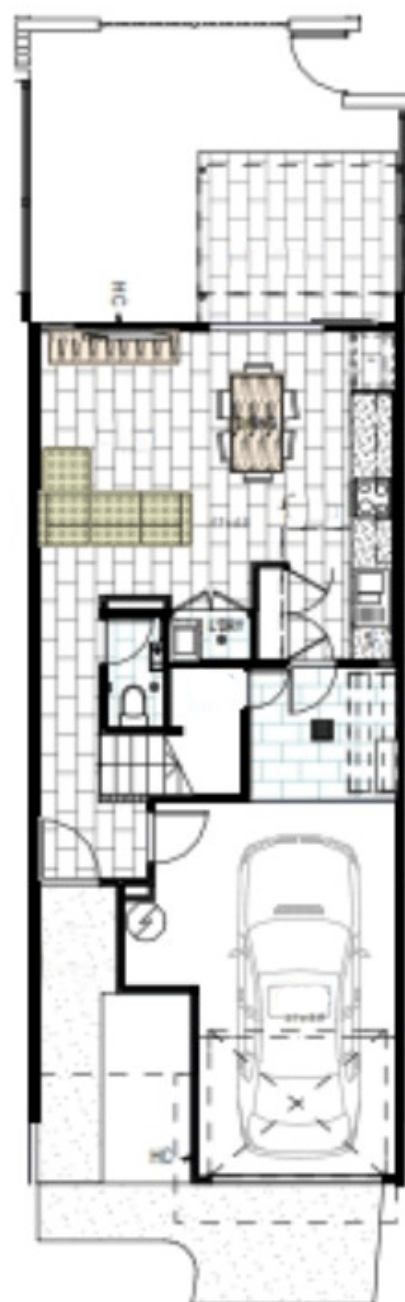
study nook and extra storage.

This home is set within a sought-after pocket of Brightwater with residents enjoying access to a communal pool and barbeque area. You will live directly opposite the deep-water canal and lake while shops, ALDI Brightwater, Brightwater Hotel and the Brightwater State School are all within easy walking distance.

At a glance:

- Ultra-modern two bedroom, 2.5 bathroom, two-storey townhouse
- Covered alfresco overlooking the generous and private courtyard
- Both bathrooms feature floor-to-ceiling tiles and stylish fixtures
- Ceiling fans and split system reverse cycle air-conditioning for added comfort
- A crisp neutral colour palette and on-trend finishes throughout the home
- Single garage with internal access
- There's a community pool, barbeque area and poolside covered lounge
- Enjoy a prime location and low body corporate fees for peace of mind
- Walk to Brightwater State School, parks, shops, Brightwater Hotel
- Easy access to Mooloolaba, USC Sunshine Coast and the Bruce Highway

The above information provided has been furnished to us by the vendor/s. We have not verified whether or not that information is accurate and do not have any belief in one way or the other in its accuracy. We do not accept any responsibility to any person for its accuracy and do no more than pass it on. All interested parties should make and rely upon their own inquiries in order to determine whether or not this information is in fact accurate.



*Ground floor*



*First floor*